






Credentials Appendix

UHF ALIEN HIGGS – 3 SERIES

UHF ALIEN HIGGS-3 SERIES CREDENTIALS

For use with AY-U900 reader series



	Part Number	Type	Technology	Prog. Mem. Size	Form Factor	Format	ID Printing
	LT-UVS-26A-3000	Programmed	ISO18000-6C	64 Bytes	ISO Card (PVC)	Wiegand 26-Bit	Inkjet – FC & Card ID (decimal)
	LT-UVH-26A-7000	Programmed	ISO18000-6C	64 Bytes	Hard Tag	Wiegand 26-Bit	Laser Engraving – FC & Card ID (decimal)
	LT-UVT-26A-3000	Programmed	ISO18000-6C	64 Bytes	Tamper Paper Label	Wiegand 26-Bit	Inkjet – FC & Card ID (decimal)
	AT-UVT-000-0000	Not Programmed	ISO18000-6C	64 Bytes	Tamper Paper Label	Not Formatted	No ID Printed
	AT-Z4S-000-0000	Not Programmed	ISO18000-6C + MIFARE Classic	4K	ISO Card (PVC)	Not Formatted	No ID Printed

TEMIC SERIES

For use with Proximity & goPROX Readers







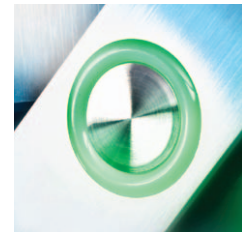
CP-R20U



USB Proximity Card Programmer for TEMIC Series

- USB 2.0 link to PC
- Supports standard EM4002 and Rosslare card formats
- Card types supported: Atmel 555x, Sokymat, Temic 555x
- 125 kHz, ASK modulation

	Part Number	Type	Technology	Prog. Mem. Size	Form Factor	Format	ID Printing
	AT-TUC-000-0001 (was AT-T11)	Not Programmed	TEMIC (ASK)	32 Bytes	Clamshell Card	Not Formatted	No ID Printed
	AT-TUC-000-0000	Not Programmed	TEMIC (ASK)	32 Bytes	Clamshell Card	Not Formatted	No ID Printed
	AT-TUS-000-0001 (was AT-T14)	Not Programmed	TEMIC (ASK)	32 Bytes	ISO Card (PVC)	Not Formatted	No ID Printed
	AT-TUS-000-0000	Not Programmed	TEMIC (ASK)	32 Bytes	ISO Card (PVC)	Not Formatted	No ID Printed



13.56 MHz MIFARE® CLASSIC, PLUS S, PLUS X, & DESFIRE® EV1

MIFARE® CLASSIC 1K SERIES

For use with O2S Reader series



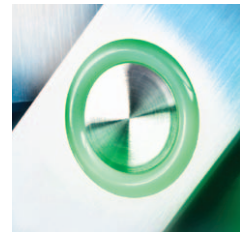
	Part Number	Type	Technology	Prog. Mem. Size	Form Factor	Format	ID Printing
	AT-D1S-000-0001 (was AT-T512)	Not Programmed	MIFARE Classic – 4UID	1K	ISO Card (PVC)	Not Formatted	No ID Printed
	AT-C1S-000-0000	Not Programmed	MIFARE Classic – 7UID	1K	ISO Card (PVC)	Not Formatted	No ID Printed
	RT-C1S-26A-3000	O2S – Rosslare Keys	MIFARE Classic – 7UID	1K	ISO Card (PVC)	Wiegand 26-Bit	Inkjet – FC & Card ID (decimal)
	RT-C1S-38A-3000	O2S – Rosslare Keys	MIFARE Classic – 7UID	1K	ISO Card (PVC)	Wiegand 38-Bit (Rosslare Proprietary)	Inkjet – FC & Card ID (decimal)
	AT-D1K-000-05B0 (was AT-T551B)	Not Programmed	MIFARE Classic – 4UID	1K	Key Fob	Not Formatted	No ID Printed
	AT-C1K-000-05B0	Not Programmed	MIFARE Classic – 7UID	1K	Key Fob	Not Formatted	No ID Printed
	RT-C1K-26A-75B0	O2S – Rosslare Keys	MIFARE Classic – 7UID	1K	Key Fob	Wiegand 26-Bit	Laser Engraving – FC & Card ID (decimal)
	RT-C1K-38A-75B0	O2S – Rosslare Keys	MIFARE Classic – 7UID	1K	Key Fob	Wiegand 38-Bit (Rosslare Proprietary)	Laser Engraving – FC & Card ID (decimal)
	AT-C1K-000-0RB0	Not Programmed	MIFARE Classic – 7UID	1K	Key Fob	Not Formatted	No ID Printed
	RT-C1K-26A-7RB0	O2S – Rosslare Keys	MIFARE Classic – 7UID	1K	Key Fob	Wiegand 26-Bit	Laser Engraving – FC & Card ID (decimal)
	RT-C1K-38A-7RB0	O2S – Rosslare Keys	MIFARE Classic – 7UID	1K	Key Fob	Wiegand 38-Bit (Rosslare Proprietary)	Laser Engraving – FC & Card ID (decimal)
	AT-C1K-000-0TB0	Not Programmed	MIFARE Classic – 7UID	1K	Key Fob	Not Formatted	No ID Printed
	RT-C1K-26A-7TB0	O2S – Rosslare Keys	MIFARE Classic – 7UID	1K	Key Fob	Wiegand 26-Bit	Laser Engraving – FC & Card ID (decimal)
	RT-C1K-38A-7TB0	O2S – Rosslare Keys	MIFARE Classic – 7UID	1K	Key Fob	Wiegand 38-Bit (Rosslare Proprietary)	Laser Engraving – FC & Card ID (decimal)

MIFARE® CLASSIC 4K SERIES

For use with O2S Reader series








	Part Number	Type	Technology	Prog. Mem. Size	Form Factor	Format	ID Printing
	AT-D4S-000-0001 (was AT-T513)	Not Programmed	MIFARE Classic – 4UID	4K	ISO Card (PVC)	Not Formatted	No ID Printed
	AT-C4S-000-0000	Not Programmed	MIFARE Classic – 7UID	4K	ISO Card (PVC)	Not Formatted	No ID Printed
	RT-C4S-26A-3000	O2S – Rosslare Keys	MIFARE Classic – 7UID	4K	ISO Card (PVC)	Wiegand 26-Bit	Inkjet – FC & Card ID (decimal)
	RT-C4S-38A-3000	O2S – Rosslare Keys	MIFARE Classic – 7UID	4K	ISO Card (PVC)	Wiegand 38-Bit (Rosslare Proprietary)	Inkjet – FC & Card ID (decimal)
	AT-D4K-000-0SBO	Not Programmed	MIFARE Classic – 4UID	4K	Key Fob	Not Formatted	No ID Printed
	AT-C4K-000-0SBO	Not Programmed	MIFARE Classic – 7UID	4K	Key Fob	Not Formatted	No ID Printed
	RT-C4K-26A-7SB0	O2S – Rosslare Keys	MIFARE Classic – 7UID	4K	Key Fob	Wiegand 26-Bit	Laser Engraving – FC & Card ID (decimal)
	RT-C4K-38A-7SB0	O2S – Rosslare Keys	MIFARE Classic – 7UID	4K	Key Fob	Wiegand 38-Bit (Rosslare Proprietary)	Laser Engraving – FC & Card ID (decimal)
	AT-C4K-000-0RBO	Not Programmed	MIFARE Classic – 7UID	4K	Key Fob	Not Formatted	No ID Printed
	RT-C4K-26A-7RB0	O2S – Rosslare Keys	MIFARE Classic – 7UID	4K	Key Fob	Wiegand 26-Bit	Laser Engraving – FC & Card ID (decimal)
	RT-C4K-38A-7RB0	O2S – Rosslare Keys	MIFARE Classic – 7UID	4K	Key Fob	Wiegand 38-Bit (Rosslare Proprietary)	Laser Engraving – FC & Card ID (decimal)
	AT-C4K-000-0TB0	Not Programmed	MIFARE Classic – 7UID	4K	Key Fob	Not Formatted	No ID Printed
	RT-C4K-26A-7TB0	O2S – Rosslare Keys	MIFARE Classic – 7UID	4K	Key Fob	Wiegand 26-Bit	Laser Engraving – FC & Card ID (decimal)
	RT-C4K-38A-7TB0	O2S – Rosslare Keys	MIFARE Classic – 7UID	4K	Key Fob	Wiegand 38-Bit (Rosslare Proprietary)	Laser Engraving – FC & Card ID (decimal)



MIFARE® PLUS S 2K SERIES

For use with O2S Reader series



	Part Number	Type	Technology	Prog. Mem. Size	Form Factor	Format	ID Printing
	AT-P2S-000-0000	Not Programmed	MIFARE Plus S	2K	ISO Card (PVC)	Not Formatted	No ID Printed
	RT-P2S-26A-3000	O2S – Rosslare Keys	MIFARE Plus S	2K	ISO Card (PVC)	Wiegand 26-Bit	Inkjet – FC & Card ID (decimal)
	RT-P2S-38A-3000	O2S – Rosslare Keys	MIFARE Plus S	2K	ISO Card (PVC)	Wiegand 38-Bit (Rosslare Proprietary)	Inkjet – FC & Card ID (decimal)
	AT-P2K-000-0SB0	Not Programmed	MIFARE Plus S	2K	Key Fob	Not Formatted	No ID Printed
	RT-P2K-26A-7SB0	O2S – Rosslare Keys	MIFARE Plus S	2K	Key Fob	Wiegand 26-Bit	Laser Engraving – FC & Card ID (decimal)
	RT-P2K-38A-7SB0	O2S – Rosslare Keys	MIFARE Plus S	2K	Key Fob	Wiegand 38-Bit (Rosslare Proprietary)	Laser Engraving – FC & Card ID (decimal)
	AT-P2K-000-0RB0	Not Programmed	MIFARE Plus S	2K	Key Fob	Not Formatted	No ID Printed
	RT-P2K-26A-7RB0	O2S – Rosslare Keys	MIFARE Plus S	2K	Key Fob	Wiegand 26-Bit	Laser Engraving – FC & Card ID (decimal)
	RT-P2K-38A-7RB0	O2S – Rosslare Keys	MIFARE Plus S	2K	Key Fob	Wiegand 38-Bit (Rosslare Proprietary)	Laser Engraving – FC & Card ID (decimal)
	AT-P2K-000-0TB0	Not Programmed	MIFARE Plus S	2K	Key Fob	Not Formatted	No ID Printed
	RT-P2K-26A-7TB0	O2S – Rosslare Keys	MIFARE Plus S	2K	Key Fob	Wiegand 26-Bit	Laser Engraving – FC & Card ID (decimal)
	RT-P2K-38A-7TB0	O2S – Rosslare Keys	MIFARE Plus S	2K	Key Fob	Wiegand 38-Bit (Rosslare Proprietary)	Laser Engraving – FC & Card ID (decimal)

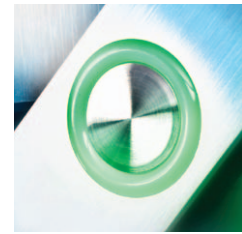
MIFARE® PLUS S 4K SERIES

For use with O2S Reader series



	Part Number	Type	Technology	Prog. Mem. Size	Form Factor	Format	ID Printing
	AT-P4S-000-0000	Not Programmed	MIFARE Plus S	4K	ISO Card (PVC)	Not Formatted	No ID Printed
	RT-P4S-26A-3000	O2S – Rosslare Keys	MIFARE Plus S	4K	ISO Card (PVC)	Wiegand 26-Bit	Inkjet – FC & Card ID (decimal)
	RT-P4S-38A-3000	O2S – Rosslare Keys	MIFARE Plus S	4K	ISO Card (PVC)	Wiegand 38-Bit (Rosslare Proprietary)	Inkjet – FC & Card ID (decimal)
	AT-P4K-000-0S00	Not Programmed	MIFARE Plus S	4K	Key Fob	Not Formatted	No ID Printed
	RT-P4K-26A-7S00	O2S – Rosslare Keys	MIFARE Plus S	4K	Key Fob	Wiegand 26-Bit	Laser Engraving – FC & Card ID (decimal)
	RT-P4K-38A-7S00	O2S – Rosslare Keys	MIFARE Plus S	4K	Key Fob	Wiegand 38-Bit (Rosslare Proprietary)	Laser Engraving – FC & Card ID (decimal)
	AT-P4K-000-0R00	Not Programmed	MIFARE Plus S	4K	Key Fob	Not Formatted	No ID Printed
	RT-P4K-26A-7R00	O2S – Rosslare Keys	MIFARE Plus S	4K	Key Fob	Wiegand 26-Bit	Laser Engraving – FC & Card ID (decimal)
	RT-P4K-38A-7R00	O2S – Rosslare Keys	MIFARE Plus S	4K	Key Fob	Wiegand 38-Bit (Rosslare Proprietary)	Laser Engraving – FC & Card ID (decimal)
	AT-P4K-000-0T00	Not Programmed	MIFARE Plus S	4K	Key Fob	Not Formatted	No ID Printed
	RT-P4K-26A-7T00	O2S – Rosslare Keys	MIFARE Plus S	4K	Key Fob	Wiegand 26-Bit	Laser Engraving – FC & Card ID (decimal)
	RT-P4K-38A-7T00	O2S – Rosslare Keys	MIFARE Plus S	4K	Key Fob	Wiegand 38-Bit (Rosslare Proprietary)	Laser Engraving – FC & Card ID (decimal)

ACCESS CONTROL



MIFARE® PLUS X 2K SERIES

For use with O2S Reader series



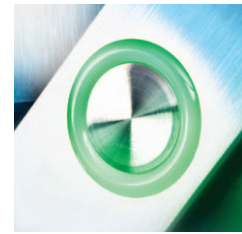
	Part Number	Type	Technology	Prog. Mem. Size	Form Factor	Format	ID Printing
	AT-X2S-000-0000	Not Programmed	MIFARE Plus X	2K	ISO Card (PVC)	Not Formatted	No ID Printed
	RT-X2S-26A-3000	O2S – Rosslare Keys	MIFARE Plus X	2K	ISO Card (PVC)	Wiegand 26-Bit	Inkjet – FC & Card ID (decimal)
	RT-X2S-38A-3000	O2S – Rosslare Keys	MIFARE Plus X	2K	ISO Card (PVC)	Wiegand 38-Bit (Rosslare Proprietary)	Inkjet – FC & Card ID (decimal)
	AT-X2K-000-05B0	Not Programmed	MIFARE Plus X	2K	Key Fob	Not Formatted	No ID Printed
	RT-X2K-26A-75B0	O2S – Rosslare Keys	MIFARE Plus X	2K	Key Fob	Wiegand 26-Bit	Laser Engraving – FC & Card ID (decimal)
	RT-X2K-38A-75B0	O2S – Rosslare Keys	MIFARE Plus X	2K	Key Fob	Wiegand 38-Bit (Rosslare Proprietary)	Laser Engraving – FC & Card ID (decimal)
	AT-X2K-000-0RB0	Not Programmed	MIFARE Plus X	2K	Key Fob	Not Formatted	No ID Printed
	RT-X2K-26A-7RB0	O2S – Rosslare Keys	MIFARE Plus X	2K	Key Fob	Wiegand 26-Bit	Laser Engraving – FC & Card ID (decimal)
	RT-X2K-38A-7RB0	O2S – Rosslare Keys	MIFARE Plus X	2K	Key Fob	Wiegand 38-Bit (Rosslare Proprietary)	Laser Engraving – FC & Card ID (decimal)
	AT-X2K-000-0TB0	Not Programmed	MIFARE Plus X	2K	Key Fob	Not Formatted	No ID Printed
	RT-X2K-26A-7TB0	O2S – Rosslare Keys	MIFARE Plus X	2K	Key Fob	Wiegand 26-Bit	Laser Engraving – FC & Card ID (decimal)
	RT-X2K-38A-7TB0	O2S – Rosslare Keys	MIFARE Plus X	2K	Key Fob	Wiegand 38-Bit (Rosslare Proprietary)	Laser Engraving – FC & Card ID (decimal)

MIFARE® PLUS X 4K SERIES

For use with O2S Reader series

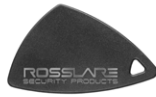


	Part Number	Type	Technology	Prog. Mem. Size	Form Factor	Format	ID Printing
	AT-X4S-000-0000	Not Programmed	MIFARE Plus X	4K	ISO Card (PVC)	Not Formatted	No ID Printed
	RT-X4S-26A-3000	O2S – Rosslare Keys	MIFARE Plus X	4K	ISO Card (PVC)	Wiegand 26-Bit	Inkjet – FC & Card ID (decimal)
	RT-X4S-38A-3000	O2S – Rosslare Keys	MIFARE Plus X	4K	ISO Card (PVC)	Wiegand 38-Bit (Rosslare Proprietary)	Inkjet – FC & Card ID (decimal)
	AT-X4K-000-0SB0	Not Programmed	MIFARE Plus X	4K	Key Fob	Not Formatted	No ID Printed
	RT-X4K-26A-7SB0	O2S – Rosslare Keys	MIFARE Plus X	4K	Key Fob	Wiegand 26-Bit	Laser Engraving – FC & Card ID (decimal)
	RT-X4K-38A-7SB0	O2S – Rosslare Keys	MIFARE Plus X	4K	Key Fob	Wiegand 38-Bit (Rosslare Proprietary)	Laser Engraving – FC & Card ID (decimal)
	AT-X4K-000-0RB0	Not Programmed	MIFARE Plus X	4K	Key Fob	Not Formatted	No ID Printed
	RT-X4K-26A-7RB0	O2S – Rosslare Keys	MIFARE Plus X	4K	Key Fob	Wiegand 26-Bit	Laser Engraving – FC & Card ID (decimal)
	RT-X4K-38A-7RB0	O2S – Rosslare Keys	MIFARE Plus X	4K	Key Fob	Wiegand 38-Bit (Rosslare Proprietary)	Laser Engraving – FC & Card ID (decimal)
	AT-X4K-000-0TB0	Not Programmed	MIFARE Plus X	4K	Key Fob	Not Formatted	No ID Printed
	RT-X4K-26A-7TB0	O2S – Rosslare Keys	MIFARE Plus X	4K	Key Fob	Wiegand 26-Bit	Laser Engraving – FC & Card ID (decimal)
	RT-X4K-38A-7TB0	O2S – Rosslare Keys	MIFARE Plus X	4K	Key Fob	Wiegand 38-Bit (Rosslare Proprietary)	Laser Engraving – FC & Card ID (decimal)



MIFARE® DESFIRE EV1 2K SERIES

For use with O2S Reader series



	Part Number	Type	Technology	Prog. Mem. Size	Form Factor	Format	ID Printing
	AT-V2S-26A-0000	Not Programmed	MIFARE DESFire EV1	2K	ISO Card (PVC)	Wiegand 26-Bit	No ID Printed
	RT-V2S-26A-3000	O2S – Rosslare Keys	MIFARE DESFire EV1	2K	ISO Card (PVC)	Wiegand 26-Bit	Inkjet – FC & Card ID (decimal)
	RT-V2S-38A-3000	O2S – Rosslare Keys	MIFARE DESFire EV1	2K	ISO Card (PVC)	Wiegand 38-Bit (Rosslare Proprietary)	Inkjet – FC & Card ID (decimal)
	AT-V2K-26A-0S0	Not Programmed	MIFARE DESFire EV1	2K	Key Fob	Wiegand 26-Bit	No ID Printed
	RT-V2K-26A-7S0	O2S – Rosslare Keys	MIFARE DESFire EV1	2K	Key Fob	Wiegand 26-Bit	Laser Engraving – FC & Card ID (decimal)
	RT-V2K-38A-7S0	O2S – Rosslare Keys	MIFARE DESFire EV1	2K	Key Fob	Wiegand 38-Bit (Rosslare Proprietary)	Laser Engraving – FC & Card ID (decimal)
	AT-V2K-26A-0RB0	Not Programmed	MIFARE DESFire EV1	2K	Key Fob	Wiegand 26-Bit	No ID Printed
	RT-V2K-26A-7RB0	O2S – Rosslare Keys	MIFARE DESFire EV1	2K	Key Fob	Wiegand 26-Bit	Laser Engraving – FC & Card ID (decimal)
	RT-V2K-38A-7RB0	O2S – Rosslare Keys	MIFARE DESFire EV1	2K	Key Fob	Wiegand 38-Bit (Rosslare Proprietary)	Laser Engraving – FC & Card ID (decimal)
	AT-V2K-26A-0TB0	Not Programmed	MIFARE DESFire EV1	2K	Key Fob	Wiegand 26-Bit	No ID Printed
	RT-V2K-26A-7TB0	O2S – Rosslare Keys	MIFARE DESFire EV1	2K	Key Fob	Wiegand 26-Bit	Laser Engraving – FC & Card ID (decimal)
	RT-V2K-38A-7TB0	O2S – Rosslare Keys	MIFARE DESFire EV1	2K	Key Fob	Wiegand 38-Bit (Rosslare Proprietary)	Laser Engraving – FC & Card ID (decimal)

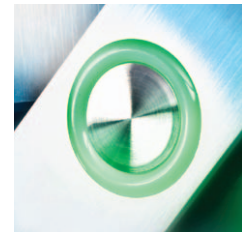
MIFARE® DESFIRE EV1 4K SERIES

For use with O2S Reader series



	Part Number	Type	Technology	Prog. Mem. Size	Form Factor	Format	ID Printing
	AT-V4S-26A-0000	Not Programmed	MIFARE DESFire EV1	4K	ISO Card (PVC)	Wiegand 26-Bit	No ID Printed
	RT-V4S-26A-3000	O2S – Rosslare Keys	MIFARE DESFire EV1	4K	ISO Card (PVC)	Wiegand 26-Bit	Inkjet – FC & Card ID (decimal)
	RT-V4S-38A-3000	O2S – Rosslare Keys	MIFARE DESFire EV1	4K	ISO Card (PVC)	Wiegand 38-Bit (Rosslare Proprietary)	Inkjet – FC & Card ID (decimal)
	AT-V4K-26A-0SBO	Not Programmed	MIFARE DESFire EV1	4K	Key Fob	Wiegand 26-Bit	No ID Printed
	RT-V4K-26A-7SB0	O2S – Rosslare Keys	MIFARE DESFire EV1	4K	Key Fob	Wiegand 26-Bit	Laser Engraving – FC & Card ID (decimal)
	RT-V4K-38A-7SB0	O2S – Rosslare Keys	MIFARE DESFire EV1	4K	Key Fob	Wiegand 38-Bit (Rosslare Proprietary)	Laser Engraving – FC & Card ID (decimal)
	AT-V4K-26A-0RB0	Not Programmed	MIFARE DESFire EV1	4K	Key Fob	Wiegand 26-Bit	No ID Printed
	RT-V4K-26A-7RB0	O2S – Rosslare Keys	MIFARE DESFire EV1	4K	Key Fob	Wiegand 26-Bit	Laser Engraving – FC & Card ID (decimal)
	RT-V4K-38A-7RB0	O2S – Rosslare Keys	MIFARE DESFire EV1	4K	Key Fob	Wiegand 38-Bit (Rosslare Proprietary)	Laser Engraving – FC & Card ID (decimal)
	AT-V4K-26A-0TB0	Not Programmed	MIFARE DESFire EV1	4K	Key Fob	Wiegand 26-Bit	No ID Printed
	RT-V4K-26A-7TB0	O2S – Rosslare Keys	MIFARE DESFire EV1	4K	Key Fob	Wiegand 26-Bit	Laser Engraving – FC & Card ID (decimal)
	RT-V4K-38A-7TB0	O2S – Rosslare Keys	MIFARE DESFire EV1	4K	Key Fob	Wiegand 38-Bit (Rosslare Proprietary)	Laser Engraving – FC & Card ID (decimal)

ACCESS CONTROL



MIFARE® DESFIRE EV1 8K SERIES

For use with O2S Reader series



	Part Number	Type	Technology	Prog. Mem. Size	Form Factor	Format	ID Printing
	AT-V8S-26A-0000	Not Programmed	MIFARE DESFire EV1	8K	ISO Card (PVC)	Wiegand 26-Bit	No ID Printed
	RT-V8S-26A-3000	O2S – Rosslare Keys	MIFARE DESFire EV1	8K	ISO Card (PVC)	Wiegand 26-Bit	Inkjet – FC & Card ID (decimal)
	RT-V8S-38A-3000	O2S – Rosslare Keys	MIFARE DESFire EV1	8K	ISO Card (PVC)	Wiegand 38-Bit (Rosslare Proprietary)	Inkjet – FC & Card ID (decimal)
	AT-V8K-26A-0SBO	Not Programmed	MIFARE DESFire EV1	8K	Key Fob	Wiegand 26-Bit	No ID Printed
	RT-V8K-26A-7SBO	O2S – Rosslare Keys	MIFARE DESFire EV1	8K	Key Fob	Wiegand 26-Bit	Laser Engraving – FC & Card ID (decimal)
	RT-V8K-38A-7SBO	O2S – Rosslare Keys	MIFARE DESFire EV1	8K	Key Fob	Wiegand 38-Bit (Rosslare Proprietary)	Laser Engraving – FC & Card ID (decimal)
	AT-V8K-26A-0RB0	Not Programmed	MIFARE DESFire EV1	8K	Key Fob	Wiegand 26-Bit	No ID Printed
	RT-V8K-26A-7RB0	O2S – Rosslare Keys	MIFARE DESFire EV1	8K	Key Fob	Wiegand 26-Bit	Laser Engraving – FC & Card ID (decimal)
	RT-V8K-38A-7RB0	O2S – Rosslare Keys	MIFARE DESFire EV1	8K	Key Fob	Wiegand 38-Bit (Rosslare Proprietary)	Laser Engraving – FC & Card ID (decimal)
	AT-V8K-26A-0TB0	Not Programmed	MIFARE DESFire EV1	8K	Key Fob	Wiegand 26-Bit	No ID Printed
	RT-V8K-26A-7TB0	O2S – Rosslare Keys	MIFARE DESFire EV1	8K	Key Fob	Wiegand 26-Bit	Laser Engraving – FC & Card ID (decimal)
	RT-V8K-38A-7TB0	O2S – Rosslare Keys	MIFARE DESFire EV1	8K	Key Fob	Wiegand 38-Bit (Rosslare Proprietary)	Laser Engraving – FC & Card ID (decimal)

EM SERIES For use with Proximity & goPROX Readers



	Part Number	Type	Technology	Prog. Mem. Size	Form Factor	Format	ID Printing
	AT-ERC-26A-3001 (was AT-R14C)	Not Programmed	EM	Read-Only	Clamshell Card	Wiegand 26-Bit	Inkjet – FC & Card ID (decimal)
	AT-ERC-26A-3000	Not Programmed	EM	Read-Only	Clamshell Card	Wiegand 26-Bit	Inkjet – FC & Card ID (decimal)
	AT-ERS-26A-3001 (was AT-R11C)	Not Programmed	EM	Read-Only	ISO Card (PVC)	Wiegand 26-Bit	Inkjet – FC & Card ID (decimal)
	AT-ERS-26A-3000	Not Programmed	EM	Read-Only	ISO Card (PVC)	Wiegand 26-Bit	Inkjet – FC & Card ID (decimal)
	AT-ERK-26A-7RB0 (was AT-R261BL)	Not Programmed	EM	Read-Only	Key Fob	Wiegand 26-Bit	Laser Engraving – FC & Card ID (decimal)
	AT-ERK-26A-7RL0	Not Programmed	EM	Read-Only	Key Fob	Wiegand 26-Bit	Laser Engraving – FC & Card ID (decimal)
	AT-ERK-26A-7TB0 (was AT-R271BL)	Not Programmed	EM	Read-Only	Key Fob	Wiegand 26-Bit	Laser Engraving – FC & Card ID (decimal)
	AT-ERK-26A-7TL0	Not Programmed	EM	Read-Only	Key Fob	Wiegand 26-Bit	Laser Engraving – FC & Card ID (decimal)