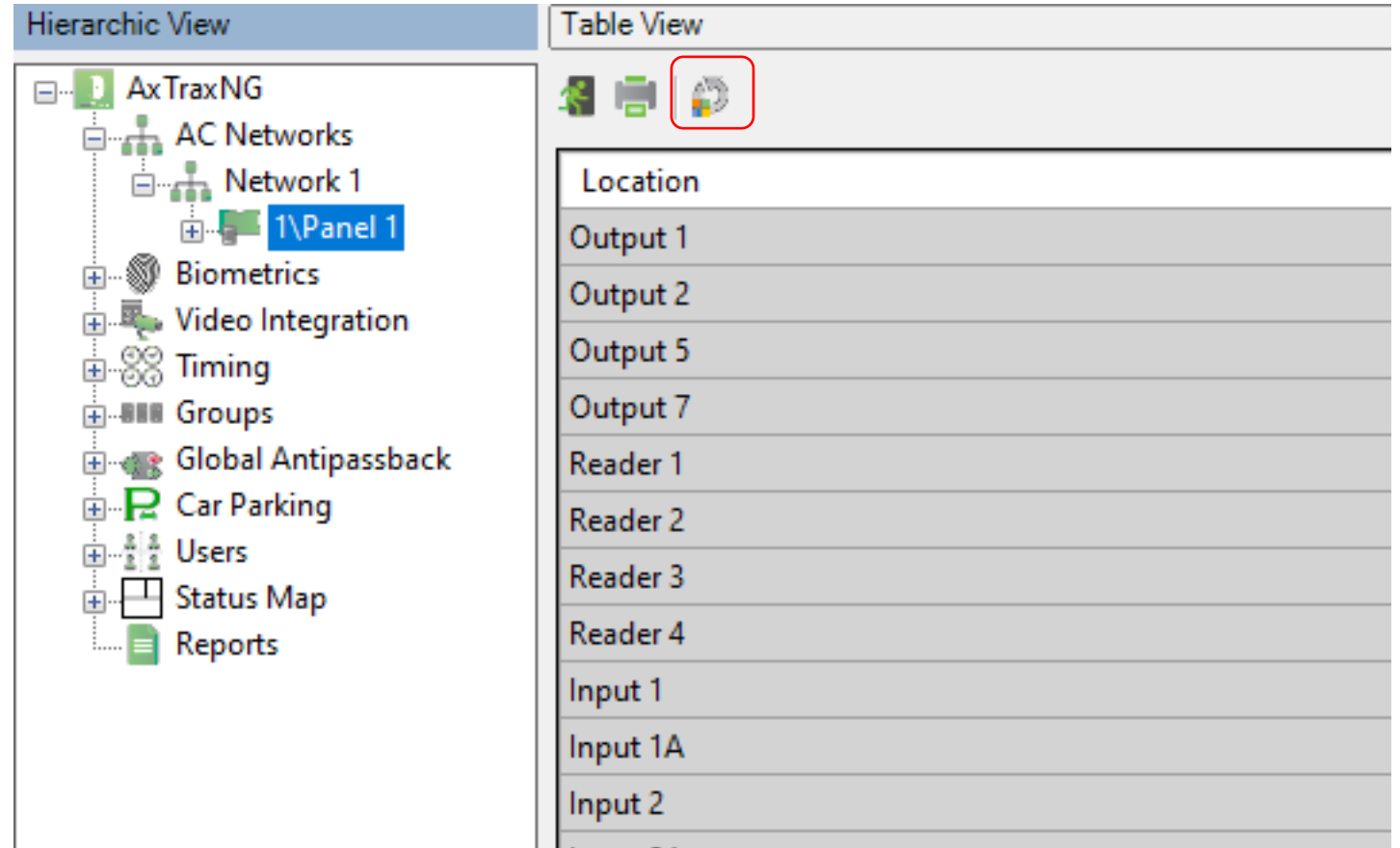
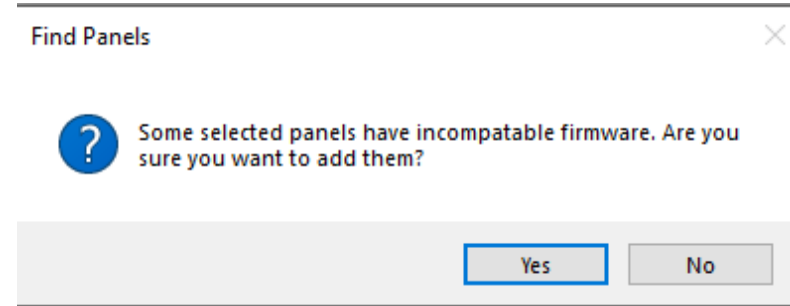


Firmware update after  
Software Update

- If you get the warning Some panels have incompatible firmware. Click Yes to add anyway.
- Highlight the panel then select firmware update.



- When the window below opens, do not change anything, click OK to start the firmware download to the panel.

The screenshot shows a software interface with a 'Hierarchic View' on the left and a 'Table View' on the right. The 'Table View' contains a table with the following data:

| Location | Description        | Status  |
|----------|--------------------|---------|
| Output 1 | 1\Panel 1\Door 1   | Unknown |
| Output 2 | 1\Panel 1\Door 2   | Unknown |
| Output 5 | 1\Panel 1\Door 3   | Unknown |
| Output 7 | 1\Panel 1\Door 4   | Unknown |
| Reader 1 | 1\Panel 1\Reader 1 | Unknown |
| Reader 2 | 1\Panel 1\Reader 2 | Unknown |
| Reader 3 | 1\Panel 1\Reader 3 | Unknown |

Overlaid on the bottom right is a dialog box titled 'Firmware Update 1\Panel 1'. It contains the following text and controls:

- Panel Type known on PC: AC-225 B MD-D02B
- Are you sure you want to update the firmware of the panel 1\Panel 1 ?
- Firmware files: ac225v05\_01\_24.hex
- Buttons: OK (highlighted with a red box) and Close

- After the update window closes, highlight the network on the left.
- The download status will show to the right as shown.

The screenshot shows the AxTraxNG software interface. The title bar reads "AxTraxNG". The menu bar includes "File", "Tools", "View", "Window", and "Help". The main window is titled "AC Networks\Network 1".

On the left, a "Hierarchic View" tree shows the following structure:

- AxTraxNG
  - AC Networks
    - Network 1** (highlighted with a red box)
    - 1\Panel 1
  - Biometrics
  - Video Integration
  - Timing
  - Groups
  - Global Antipassback

The main area displays a "Table View" with the following table:

| Enable                              | Description | Address | Type        | Hardware \ | Status      | Downloads                              |
|-------------------------------------|-------------|---------|-------------|------------|-------------|--|
| <input checked="" type="checkbox"/> | 1\Panel 1   | 1       | 1 Reader pe | AC-225 B M | Download fi | 452 / 472 (highlighted with a red box) |

Below the table is an "Events" section with a table of recent events:

| Date/Time            | Location      | Operator      | Event                             | Details                       |
|----------------------|---------------|---------------|-----------------------------------|-------------------------------|
| 4/13/2020 3:17:18 PM | Server        | AxTraxNG      | Started Firmware update 1\Panel 1 |                               |
| 4/13/2020 3:17:17 PM | LBROSSLAREHP7 | Administrator | 1\Panel 1 Firmware update         |                               |
| 4/13/2020 3:17:16 PM | 1\Panel 1     | Server        | Invalid Firmware                  | Wrong value is ac225v05_00_14 |