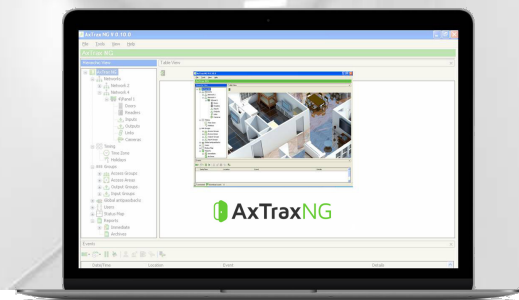


# AxTraxNG

## Access Control Management Software

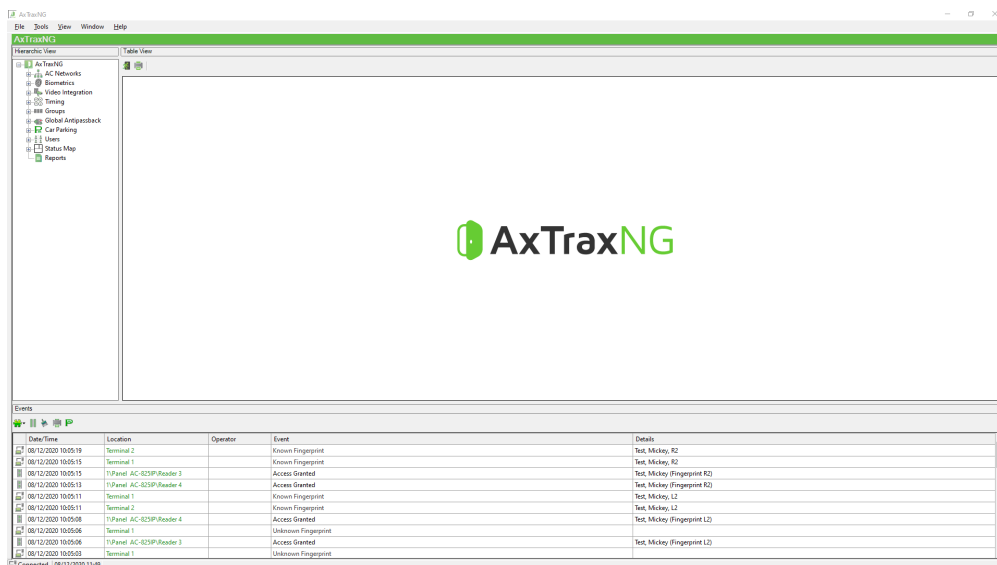
V27.7.1.19

## Release Notes



### 1. General

- Product Name: AxTraxNG™ Server / AxTraxNG™ Client
- Release Software Version Number: V27.7.1.19: General availability minor release version (this version to be shipped with all future product shipments).  
**The installer file, datasheet and manual for this version are available from the Partner Zone on the Rosslare web site.**
- Previous Software Release Version Number: 27.7.1.18 (27/04/2021)
- Product Summary: includes AxTraxNG™ Server/Client and AxTraxNG™ Server Monitor, AxTime™, and required redistributables



### 1.1. Release Overview

This release of AxTraxNG V 27.7.1.19 is the newest release of the V 27.7.x.x, since the previous release of AxTraxNG V 27.7.1.18 (April 2021). It includes all of the bug fixes and system optimization for all the major cases found in the field by the technical support team.

## 2. Supported Hardware Products

### 825-Panel

- AC-825IP (Networked Control Panel built into ME-1515 Enclosure)
- AC-825IP-PCBA (Control Panel Only)
- R-805 - (16 Relay Output Expansion for AC-825IP)
- S-805 - (8 Sensor Input Expansion for AC-825IP)
- D-805 - (4 Reader door Interface Expansion for AC-825IP)
- P-805 - (16 Inputs, 8 Relay Output Expansion for AC-825IP)

### A-Panels ( Rosslare Legacy Networked Access Controllers)

- AC-215, AC-215IP
- AC-225, AC-225IP - (MD-D02, MD-IO84 Expansions for AC-225x)
- AC-425, AC-425IP - (MD D04, MD-IO84 Expansions for AC-425x)

### B-Panels

- AC-215-B - (RS-485 Bus Panel built into ME-1015 Enclosure)
- AC-215IP-B - (Networked Panel built into ME-1015 Enclosure)
- AC-215-DIN - (RS-485 Bus Panel DIN Cover – No Enclosure)
- AC-215IP-DIN - (Networked Panel DIN Cover – No Enclosure)
  
- AC-225-B - (RS-485 Bus Panel built into ME-1015 Enclosure)
- AC-225IP-B - (Networked Panel built into ME-1015 Enclosure)
- AC-225-DIN - (RS-485 Bus Panel DIN Cover – No Enclosure)
- AC-225IP-DIN - (Networked Panel DIN Cover – No Enclosure)
- MD-D02B (2-Reader 4 Input 4 output Expansion for AC-225xB)
- MD-IO84B (8 Input 4 Output Expansion for AC-225xB)
  
- AC-425-B - (RS-485 Bus Panel built into ME-1015 Enclosure)
- AC-425-DIN - (RS-485 Bus Panel DIN Cover – No Enclosure)
- AC-425IP-DIN - (Networked Panel DIN Cover – No Enclosure)

- MD-D04B (4-Reader 4 Input 4 output Expansion for AC-425xB)
- MD-I084B (8 Input 4 Output Expansion for AC-425xB)

#### Rosslare Bio 8000 Series Fingerprint Terminals

- AY-B8520: Indoor networked optical fingerprint with 125 KHz (EM) RFID card reader
- AY-B8550: Indoor networked optical fingerprint with 13.56 MHz (MIFARE) RFID card reader
- AY-B8620: Outdoor networked optical fingerprint with 125 KHz (EM) RFID card reader
- AY-B8650: Outdoor networked optical fingerprint with 13.56 MHz (MIFARE) RFID card reader
- DR-B8000: USB 2.0 fingerprint enrollment scanner and desktop reader

#### Rosslare UHF-SMART Series DR-U955BT USB Enrollment Station

- DR-U955BT: Desktop enrollment station for UHF, BLE-ID and 13.56 MHz CSN

#### Rosslare Bio 9000 Series Fingerprint Terminals

- AY-B9120BT: Outdoor networked optical fingerprint with 125 KHz (EM) RFID card reader
- AY-B9150BT: Outdoor networked optical fingerprint with 13.56 MHz (MIFARE) RFID card reader
- AY-B9250BT: Outdoor networked optical fingerprint with 13.56 MHz (MIFARE) RFID card reader + LCD + 4 touch buttons and camera
- AY-B9350: Indoor networked optical fingerprint with Face recognition + EM (125 KHz) and MIFARE (13.56 MHz) card reader
- DR-B9000: USB 2.0 fingerprint enrollment scanner and desktop reader

### 3. Related Documents

The following documents for this release have been uploaded and are available from our partner downloads site.

- AxTraxNG User Guide
- AxTraxNG Datasheet

### 4. Summary of Major Features / Functionality Added

- None

## 5. Issues Resolved – since previous release V27.7.1.18

- Client does not close when the auto logout time comes when a pop-up window is open
- No event is logged for communication events
- AxTraxNG will not load with an empty DB when a DB connection error is shown
- Cannot add a PIN code that begins with the number zero (0)
- When an x-805 (piggyback) is not detected, AxTraxNG will remove it and then initiate the panel
- Does not start the webcam application
- Client stops responding when more than 10K cards are saved in the DB
- Biometric templates are not downloaded until the service is started again
- Employee UI is fragmented on Russian and Serbian language.
- Bio8000 remote enrollment over remote network failed.

## 6. Known Issues

- When a Bio 8000 and Bio 9000 biometric series device are used at the same site, users must enroll on the Bio 8000 and the Bio 9000 device with the same 10-finger GUI.
- The ViTrax™ pop up video stream may be delayed a few seconds before displaying.
- The Snapshot pop-up cannot be seen from some cameras connected to ViTrax.
- A fingerprint cannot be enrolled from Bio 9000 devices while it is set to Live Fingerprint Detection.
- Access Area occupancy report shows last day data.
- Credentials not imported for user in Unauthorized access group.
- The server overrides panel decisions regardless of the reader Wiegand format.

## 7. Miscellaneous

- Make sure that the Boot Loaders that are in the control panels and expansions are matched with the version of the control panels so that the firmware update process will be successful.
- Boot Loaders for the control panels and expansions are not public information for this release note and are only known by Global Tech Support Group (TSG) and Rosslare Manufacturing teams.
- The license supports 32 Biometric terminals (license can be extended).

## 8. Firmware Versions

Software Version	Controller Model	Firmware Version
AxTraxNG V27.7.1.19	AC-825IP	AC825v02_09_61
	D805	x805v03.54.hex
	P805	x805v03.54.hex
	S805	x805v03.54.hex
	R805	x805v03.54.hex
	AC-425B	ac425v05_01_30
	AC-425A	ac425v05_01_30
	AC-225B	ac225v05_01_30
	AC-215IPB / AC-215B	ac215Bv05_01_30
	AC-215A	ac215v04_08_23

Software Version	Terminal Model	Firmware Version
BIO8000 V1.0.0.5	AY-B8520	V78 / 6.13
	AY-B8620	V78 / 6.13
	AY-B8550	V76 / 6.12
	AY-B8650	V76 / 6.12
	DR-B8000	2.02 / 2.1

Software Version	Terminal Model	Firmware Version
BIO9000 V 2.1.7.8	AY-B9120BT	2_003_64
	AY-B9150BT	2_003_63
	AY-B9250BT	1023_36
	AY-B9350BT	1.56-011.15
	DR-B9000	

Software Version	Desktop Reader Model	Firmware Version
	DR-U955BT	DR-U995-V_01_06

- Compatible ViTrax Version – Product Version 2.5.8, Module Version 2.5.8
- Hikvision SDK Version - 5.3.2.15
- Dahua SDK Version 3.4.8.27787
- Compatible Rosslare ViTrax™ LPR – 1.9.1
- Compatible Rosslare AxTime™ software Version 27.0.0.1 (Beta)

- Hikvision\_DS-2CD4A26FWD-IZS\_FW\_v5.4.5
- LPR camera supported: Hikvision\_DS-2CD4A26FWD-IZS - FW\_v5.4.5

## 9. Supported Languages

- Arabic
- Bulgarian
- Chinese, Simplified
- Dutch
- English
- French
- Greek
- Hebrew
- Italian
- Japanese
- Portuguese
- Russian
- Serbian
- Slovenian
- Spanish
- Swedish
- Turkish

## 10. Hardware Requirements

- Intel i5 or equivalent
- 500 GB hard disk space
- 4 GB RAM
- 10/100 Ethernet Port
- Mouse
- Keyboard
- Display

## 11. Supported Software

### 11.1. Microsoft Windows OS

- Windows 8, Windows 10, Windows 11 64-bit
- Microsoft Server 2016, Windows Server 2019

### 11.2. SQL versions

- MS-SQL 2008
- MS-SQL 2012
- MS-SQL 2014
- MS-SQL 2016
- MS-SQL 2017
- MS-SQL 2019



**DISCLAIMER:** The data contained within Rosslare's materials or documentation is intended to provide only general information about products available for purchase from Rosslare Enterprises Ltd. and its associated companies ("Rosslare"). Reasonable efforts have been made to ensure the accuracy of this information. However, it might contain typographic errors, inaccuracies, or omissions that may relate to product descriptions, visual pictures, specifications, and other details. All technical specifications weights, measures and colors shown, are best approximations. Rosslare can not be held responsible and assumes no legal liability for the accuracy or completeness of the information provided. Rosslare reserves the right to change, delete, or otherwise modify the information, which is represented, at any time, without any prior notice.

© 2022 Rosslare Enterprises Ltd. All rights reserved.

For more information regarding support, visit <https://support.rosslaresecurity.com>.