


Quick Guide

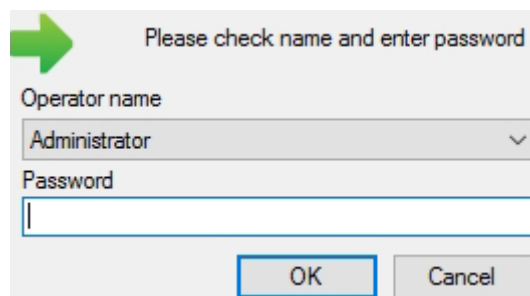
Turnkey Kit - Network Configuration

Introduction

Before you can begin to use the Mini-PC, you must set the network configuration so that the Mini-PC and the access controller use the same LAN.

Setting the LAN

1. Launch the AxTraxNG Ultralight software by double-clicking the AxTraxNG icon () on the Desktop.
2. Enter "admin" as the password of AxTraxNG Ultralight Administrator.



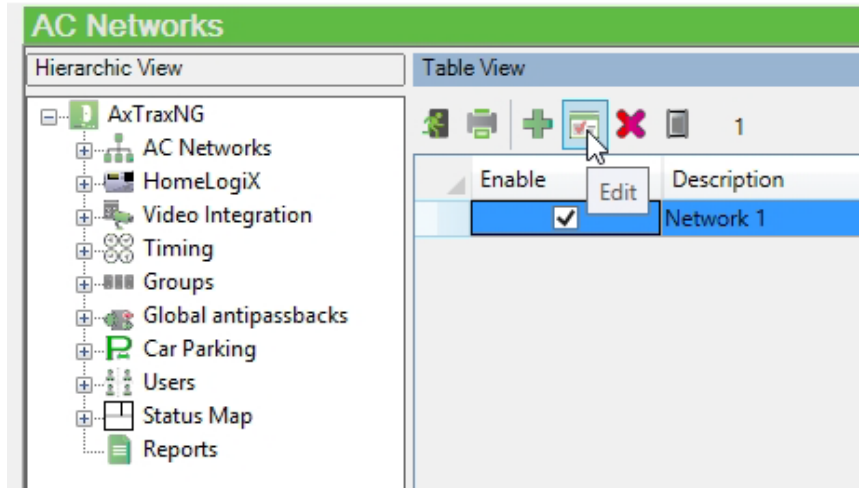
Please check name and enter password

Operator name
Administrator

Password
[]

OK Cancel

3. In the Tree View, select **AC Networks**.
4. With the installed network selected, click the  icon on the toolbar.



Depending on which access control panel is pre-installed, one of the following screens opens:

(AC-825IP)

Network

General Options

Description
Network 1

Enabled

AC type
AC-825

Network Type
TCP/IP

TCP/IP Network

IP Address
192.168.10.191

Primary Port
4000

Secondary Port
4001

Direct MAC address
F8 : BC : 41 : 00 : 2E : C7

Remote (WAN)
 Local (LAN)

Configuration...

New OK Cancel

(AC-225IP)

Network

General Options

Description
Network 1

Enabled

AC type
AC-215/215IP/225/425/525

Network Type
Serial

Serial Network

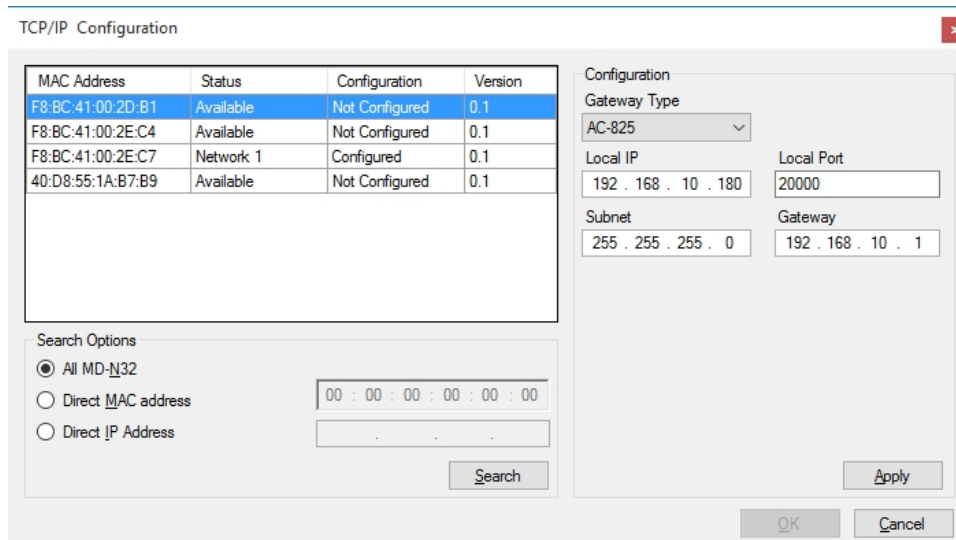
Com Port

Speed
9600

New OK Cancel

5. For the AC-225IP panel, select **TCP/IP** from the *Network Type* dropdown

6. Click **Configuration** to search for the selected panel type in the LAN.



7. Select the access controller from the list of found panels and enter the Local IP, Local Port, Subnet, and Gateway fields:

- Local IP – The panel's static IP specification
- Local Port – The panel's port of communication
- Subnet: 255.255.255.0
- Gateway – Router's IP

8. Click on **Apply** and **OK**.


The access controller is now configured for a proper communication with AxTraxNG Ultralight.

DHCP Settings

To maintain a proper panel and software connection, you must change the DHCP settings for the Mini-PC.

1. Click the Windows "Network" icon (.

2. Click "Network settings".

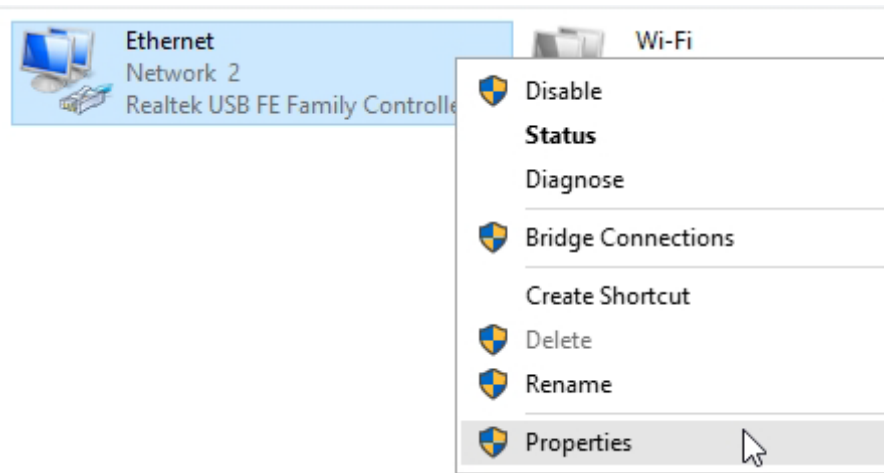
3. With the "Ethernet" item selected, click the Ethernet icon ( Ethernet Connected) to view the current IP settings of the Mini-PC. The current IP is used when locking the Mini-PC to a specific IP address.

4. Under "Related settings", click **Change adapter options**.


Related settings

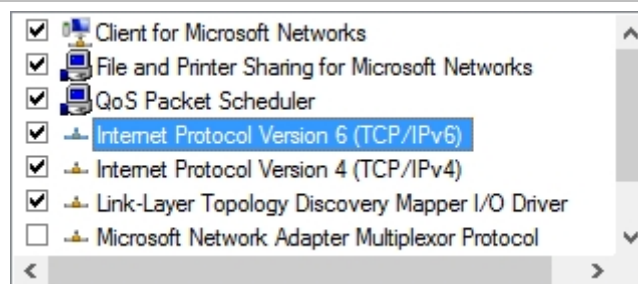
Change adapter options

5. Right-click the Ethernet adapter icon and select "Properties".

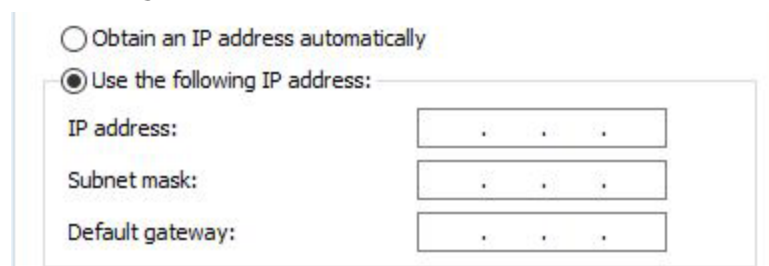


6. Use the Windows Administrator password "Rosslar3SOHO" to go to advanced settings.

 The password is case sensitive.



7. From the list, double-click Internet Protocol Version 4 (TCP/IPv4).
8. Click the **Use the following IP address** radio button.



9. Enter the current IP address (as seen on current settings in the previous menu), Subnet mask and Default gateway according to the LAN parameters to lock the Mini-PC IP address.

